



Hillcote Avenue | | London | SW16 3BQ

Offers In Excess Of £760,000



Hillcote Avenue |
 London | SW16 3BQ
 Offers In Excess Of £760,000

Discover this charming end of terrace family home on Hillcote Avenue, Norbury. Boasting three bedrooms, three bathrooms, and a sunny conservatory leading to a spacious garden, this property offers a bright and airy living space.

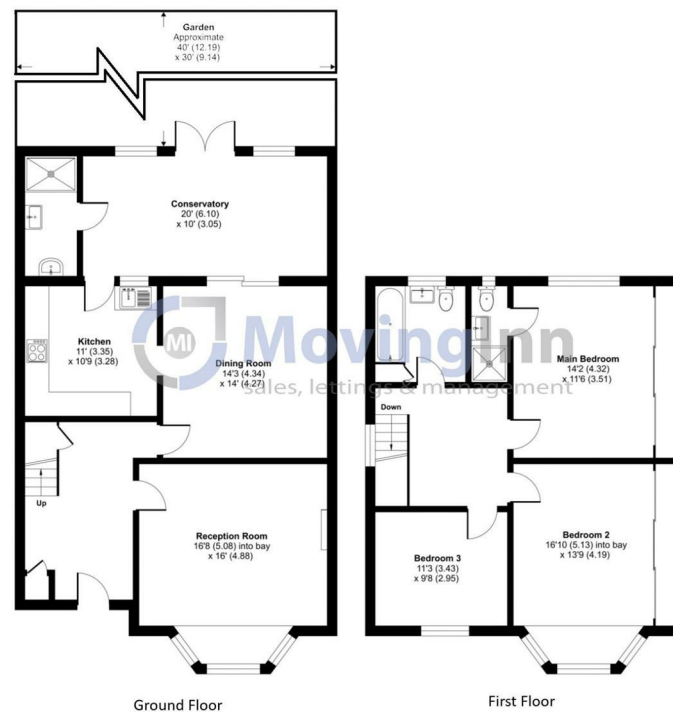
Welcome to Hillcote Avenue, Norbury, where this stunning end of terrace family home awaits you. This bright and airy property boasts three bedrooms, three bathrooms, and ample living space, making it the perfect choice for families or those seeking a spacious and comfortable living environment. The property features a sunny conservatory leading to a generous garden, ideal for outdoor relaxation and entertaining. With a spacious entrance hall and two excellent reception rooms, this home offers a welcoming and versatile layout.

Conveniently situated, this home is surrounded by an array of amenities and facilities. The property



Hillcote Avenue, London, SW16 3BQ

Approx. Area: 1726 sq ft / 160.3 sq m



For Illustration Purposes Only - Not To Scale

This floor plan should be used as general outline for guidance only. All measurements are approximate and for illustration purposes only as defined by the RICS Code of Measuring Practice ©2016.

Energy Efficiency Rating		Current	Potential
<i>Very energy efficient - lower running costs</i>			
(92 plus) A			
(81-91) B			
(69-80) C			
(55-68) D		58	76
(39-54) E			
(21-38) F			
(1-20) G			
<i>Not energy efficient - higher running costs</i>			
England & Wales		EU Directive 2002/91/EC	

Council Tax Band F
 EPC Rating D

467 Norwood Road
 West Norwood
 London
 SE27 9DJ

02087610830
 dean@movinginn.co.uk
 www.movinginn.co.uk